

SINGLE EFFECT LINEAR GRADER

ECONOMICAL, HIGH-PERFORMANCE, RELIABLE

INOX
316L
HIGH QUALITY
★★★

Our single effect linear grader is one of the most economical and high-performance solutions on the market. Designed for oyster and shellfish farming, it helps optimize your production while reducing operators' physical effort and improving work efficiency.

It can handle up to **6,000 weighings per hour**, with an integrated counting system and cumulative weight total and **oyster count for precise calibrating monitoring** of the grading process.


in different configurations to perfectly suit your installation.



FEEDING OPTIONS

-  By rotary table (standard)
-  By stepped belt
-  With feeding to a sorting belt

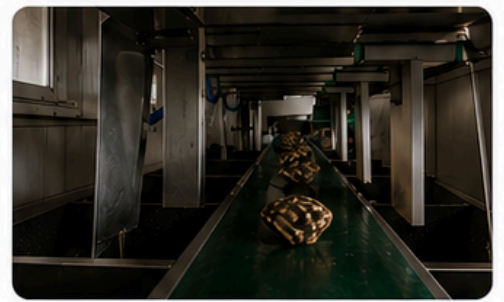
 UP TO
6,000 WEIGHINGS
PER HOUR

 INTEGRATED COUNTING
AND CUMULATIVE
WEIGHT TOTAL
Precise grading monitoring

 ECONOMICAL AND
HIGH-PERFORMANCE
SOLUTION
Reliable and durable

EASY CONDITIONING

Graded oysters can be conditioned directly in bags or crates, making work easier and improving productivity.



1ST PRIZE
SAINT-LÔ TRADE SHOW
MARCH 31, 2009

This machine was awarded 1st prize at the Saint-Lô Trade Show on March 31, 2009, in recognition of its reliability and efficiency in the shellfish sector.



ROBUST & DURABLE
Design in stainless steel for optimal resistance in marine environments.



EASY TO USE
Intuitive interface and simple settings for efficient operation.



EASY MAINTENANCE
Simplified access to components for quick maintenance.



OPTIMIZED PRODUCTIVITY
Save time and improve the quality of your production.



 02.51.68.75.76

 info@hardouin-sas.fr

 www.hardouin-sas.fr